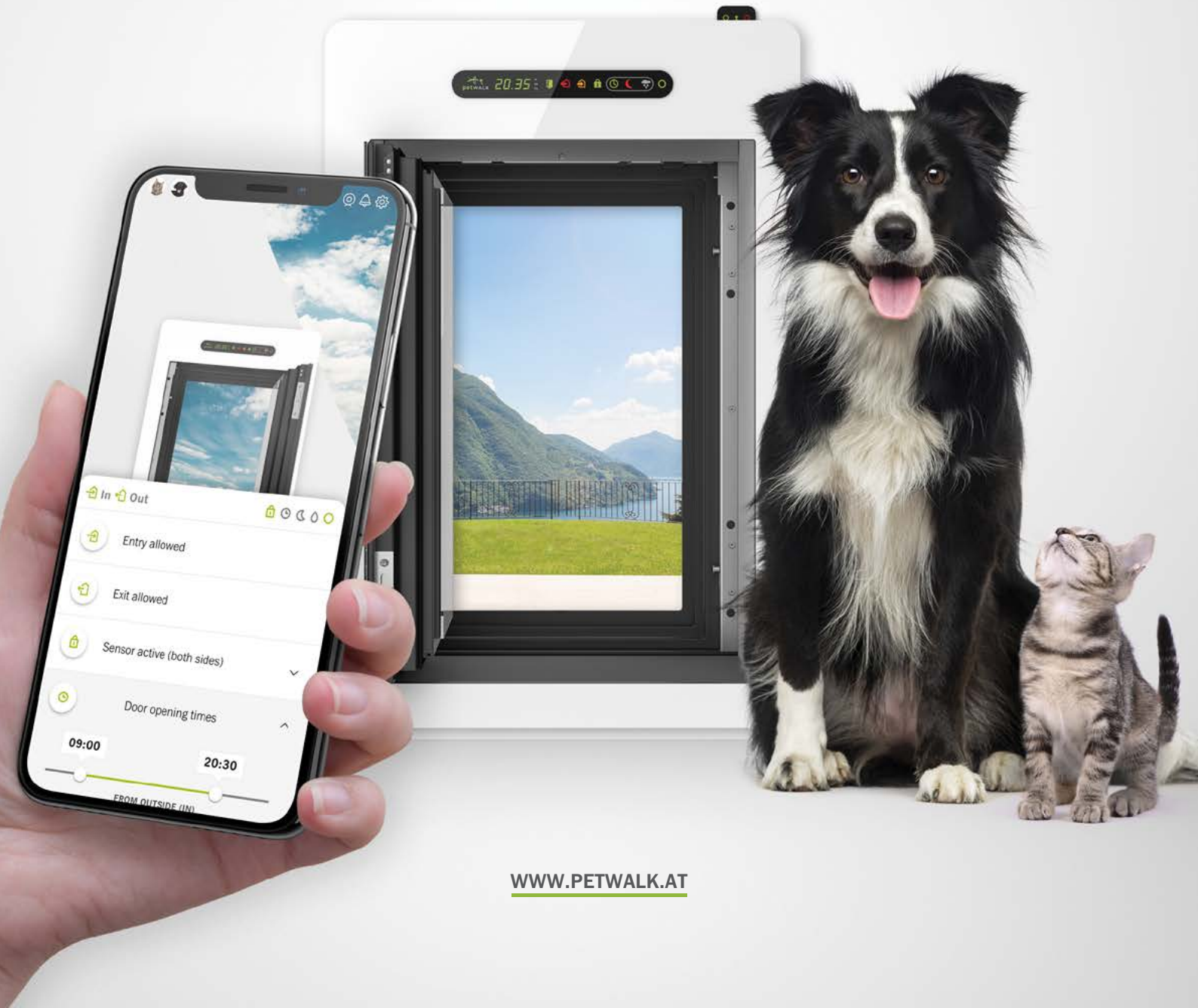


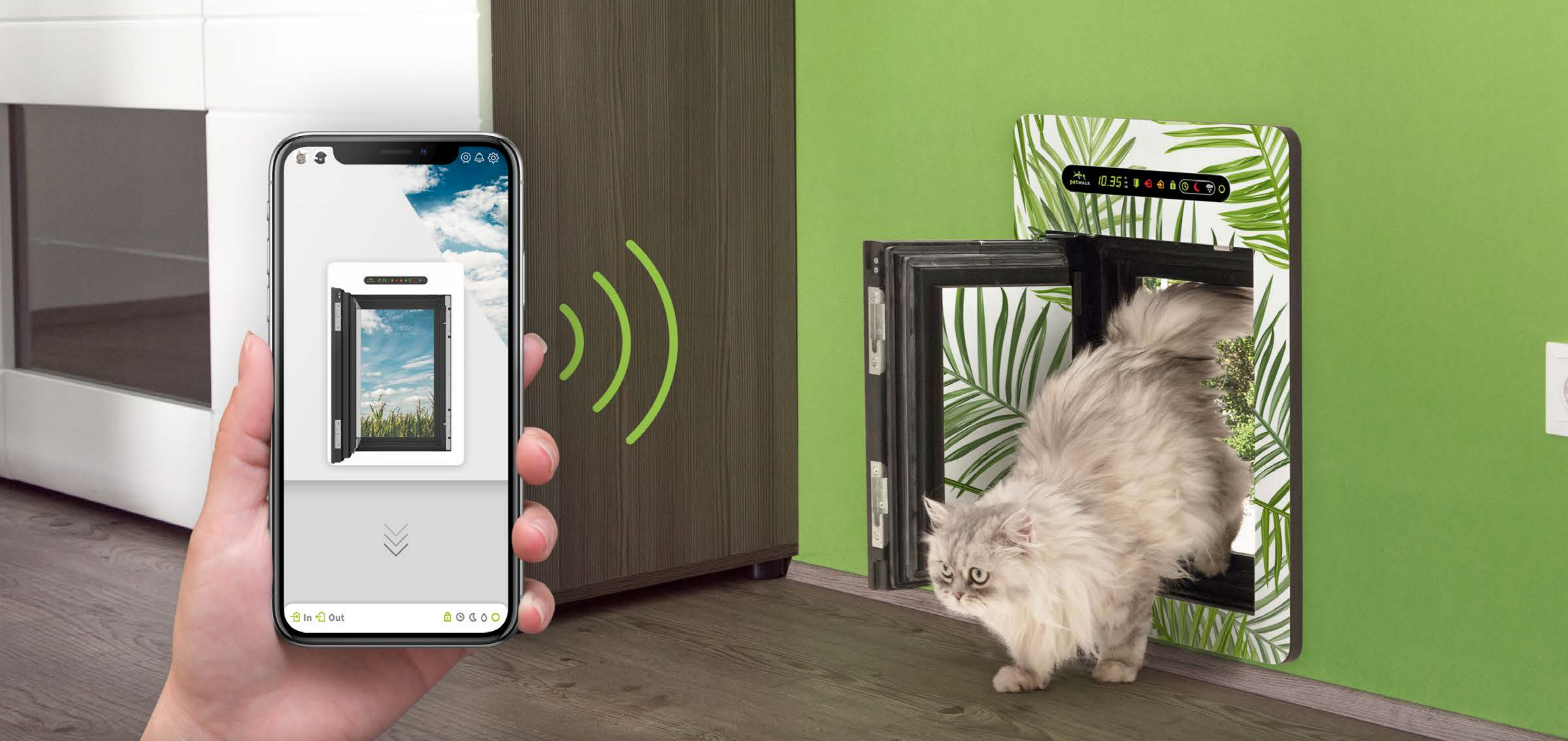


My door. My freedom.

PREMIUM PET DOORS. FULLY CONNECTED.



WWW.PETWALK.AT



It works like magic.

STAY IN CONTACT WITH YOUR PERSONAL PET CARER FROM ANYWHERE



FREEDOM FOR YOU AND YOUR PET!

Enjoy a quality of life thus far unheard of. Treat yourself to an invisible butler, who will automatically open the door for your pet and your pet only.



CONTROL FROM NEAR AND FAR

Use a remote, your mobile, a web browser or smart home devices like Amazon Alexa™ to control your door from anywhere. Opening, closing and all the settings are just a tap away. It's so easy!



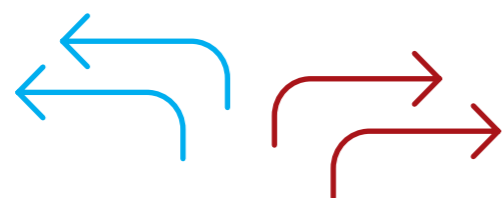
THE HIGH-TECH BABYSITTER

petWALK is like an intelligent fellow, helping you to take care of your pets. It makes sure that your animals use the door only at conditions you approve and ensures by an ingenious security system they always stay safe.



MODULAR & FLEXIBLE

You can extend petWALK with additional modules like an external RFID reader or cloud based services. This way, you can always adapt the petWALK door to the latest technologies and most important - your needs.



Warmth & weathertightness

YOUR PET GETS OUTSIDE, NOT YOUR THERMAL ENERGY



SAY GOODBYE TO DRAFTS!

Unlike common cat and dog flaps, petWALK pet doors are 100% airtight. You're guaranteed no drafts and no loss of heat in your home. The only solution for buildings with regulated ventilation systems.



THERMAL INSULATION AT HIGHEST LEVEL

petWALK are the only pet doors in the world that comply with the strict guidelines for passive houses. You not only save money, but also do your bit for the environment.



WATER STOPP!

petWALK pet doors stay watertight during the heaviest cloudbursts. Built with no thermal bridges, there's no condensation and therefore also no harmful mould.



KEEP NOISE AND DUST OUT!

petWALK pet doors completely lock out environmental noise and road dust. Thanks to the elegant motorized door opener there is also no more loud flap chattering.



Safety first. Always.

BURGLAR RESISTENT, FULLY ALARMED AND WITH MODERN RFID TECHNOLOGY



BURGLARS? NOT A CHANCE!

Conventional dog and cat flaps offer no protection against burglars and jeopardise your insurance coverage. However, thanks to RC2 fittings the petWALK pet doors are at least as safe as high quality front doors.



VIDEO INTERCOM

Use cloud cams like the Nest™ Cam Outdoor as intelligent video intercom, which allows you to monitor activity in front of the petWALK pet door and either open it or activate the intruder alarm.



SECURE RFID TECHNOLOGY

petWALK pet doors use implanted and external pet ID chips as house keys. That way, only your pets can use the pet door at times you permit. Other unwelcome "guests" are locked out.



BUILT-IN ALARM

All petWALK pet doors have a built-in alarm system. They can also be connected to existing house security systems. Your pet's freedom and your home's safety are no longer a contradiction.



Brilliant design.

ALWAYS FITS YOU AND YOUR HOME



THE MOST BEAUTIFUL PET DOORS IN THE WORLD.

Say goodbye to the idea of a pet door being a stain on your house's exterior. Stylish design and high-quality materials mean that you won't want to hide a petWALK pet door in the basement.



CHANGEABLE AS A CHAMELEON

petWALK pet doors are made for eternity and yet they can always look different. Thanks to the unique clip-on frames the door adjusts to its environment. Be it a new coat of paint, a new floor or a new furnishing: petWALK will always fit!



IN ABUNDANCE

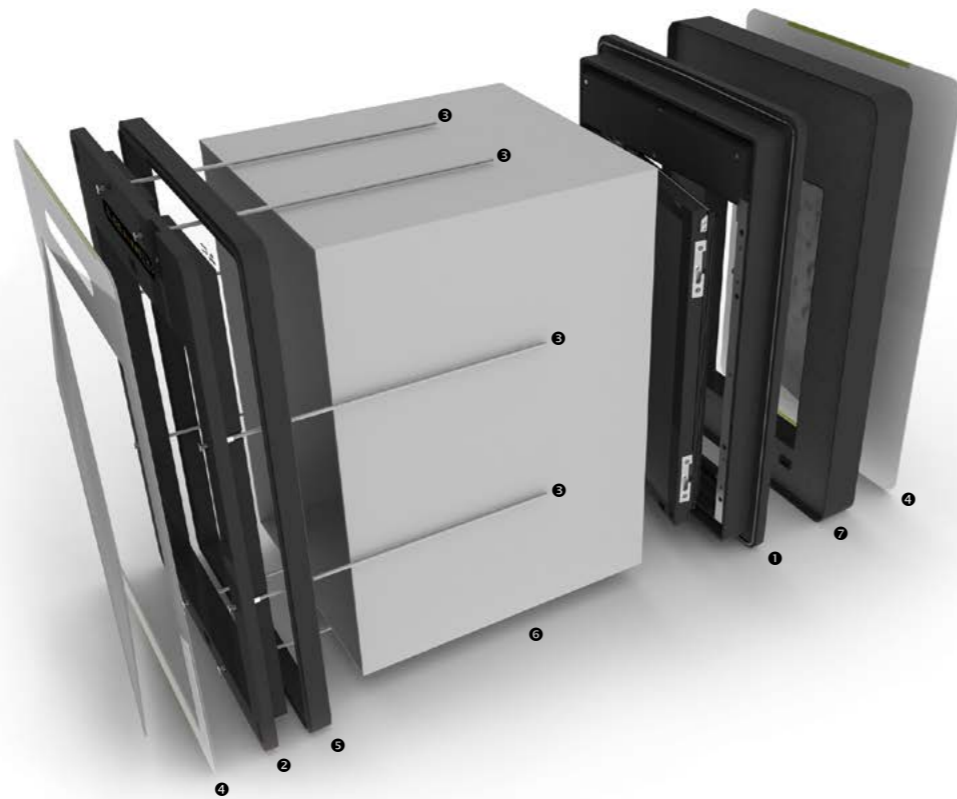
Discover a whole new world. A world in which you decide what your pet door looks like. Choose between different materials and colours. You decide whether you want a model made of acrylic glass or laminate.



BECOME A DESIGNER!

Do you want to let your creativity flow? No problem! We'll print your very own design on the cover of your very personal pet door. Just upload your design with the order and your door gets almost as unique as your favorites.

In 5 easy steps to your petWALK pet door.



1. The petWALK Door System

petWALK pet doors are not only the world's first front doors that have been designed specifically for pets, but they can also be flexibly adapted to your personal needs and circumstances.

FUNCTIONS

Unlike conventional manual pet flaps, where your pets have to open the flaps with their head, petWALK uses a completely different construction principle. A highly thermally insulated door leaf is moved by a powerful motor. When closed, the door leaf is pressed firmly against two circular (O-Ring) seals and locked mechanically. This provides a completely airtight lock and a high degree of anti-burglary security.

The petWALK pet door is controlled fully electronically. When the pet approaches, the petWALK pet door recognises it with the help of motion sensors and thus opens the door leaf. If RFID access control is activated only tagged animals are allowed access and the door operates as follows: The motion sensors recognise movement and activate the RFID antenna. This emits a magnetic field and activates the chip located on the pet. The chip sends a signal and the petWALK pet door opens - only if that particular chip has been programmed into the petWALK pet door.

DOOR MODULE

The petWALK door module is the heart of your personal animal entrance solution. It already includes the entire range of functions and is available in two different sizes, with left/right hinged door leaves and suitable for all possible installation situations.

In addition, it includes everything needed for installation in structures from 2 cm (0.8") up to 10 cm (4") thickness. For thinner components a so-called spacer is included 5 as well. In addition, a remote control, a power adapter, a RFID collar tag and installation accessories are included.

The door system itself consists of the outer frame 1 and the inner frame 2, which are pressed against one another by means of threaded rods 3 and are thereby fixed with the component.

At the outer frame the automatically driven door leaf, locking mechanisms as well as the control electronics and the backup

battery are attached. The inner flange comprises the display and the receiving unit for the remote control.

EXTENSIONS

With a wall thickness of more than 10 cm (4"), a tunnel 6 is needed to bridge the distance between the outer and inner frame.

With an optional externally mounted frame insulation 7 you can further improve the already outstanding thermal insulation quality

of the petWALK door system. So your pet door will become the perfect solution for your high-quality passive house or plus energy building.

DESIGN ELEMENTS

At the outside of our pet door decorative covers 4 (for example acrylic or HPL material) are attached so that the door fits perfectly to its surrounding living area.

2. The Optimum Size

The ideal size for your pets is to be selected.

The model „Medium“ has a passage dimension of 20cm (8") width and 30cm (11") in height and is suitable for cats and smaller dogs.

The model „Large“ is suitable for larger dogs with a shoulder height of up to 60cm (25") and has a clear opening of 30cm (11") width and 50cm (20") height.

The shoulder width and chest level of the animal determine the minimum opening width. The abdominal height is the measure of the maximum installation height and shoulder width must not exceed the passage width.

If several animals of different sizes shall use the door, the largest animal is crucial for choosing the model size, the belly height of the smallest animal is taken to position the petWALK pet door.

Using the petWALK pet door is most comfortable for your pet when it can pass it easily without bending down or climbing up. This situation is achieved when the top edge of the door lies above the withers and the lower edge is positioned just above the ground.

If the petWALK pet door is installed into narrow components such as glazing or doors, even much larger animals can use the door and the door can even be installed slightly higher.

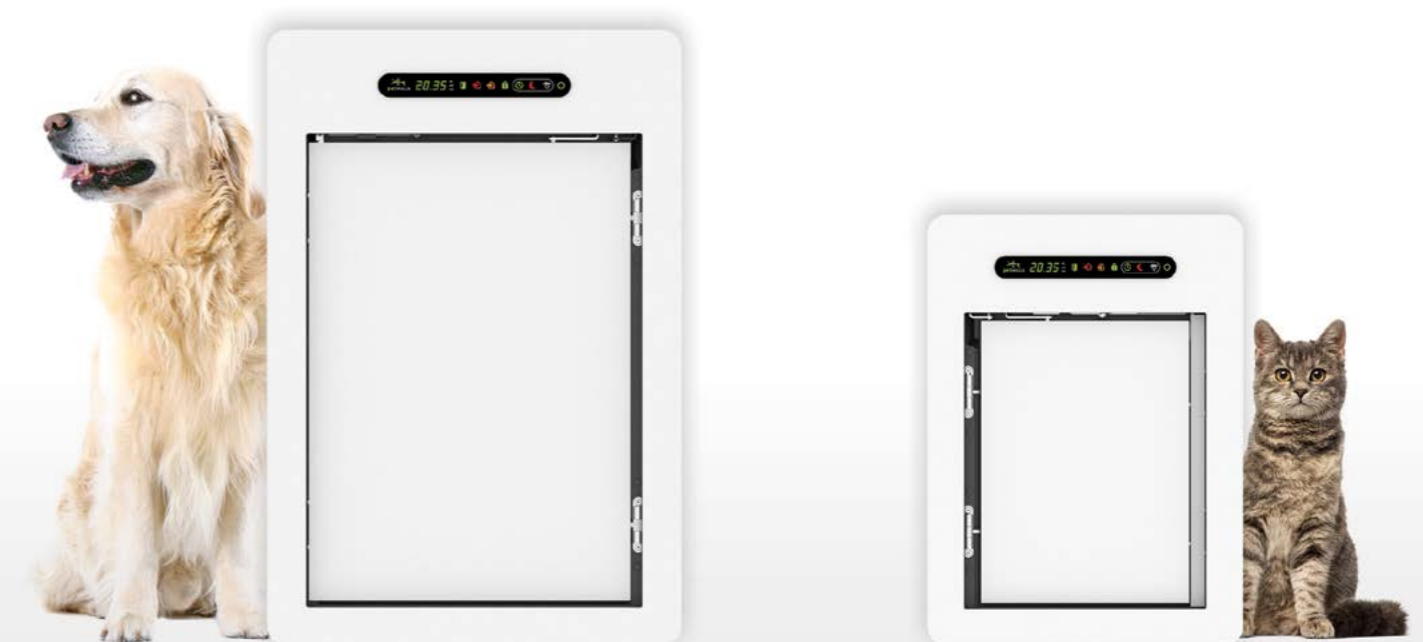
Note, however, that for optimal function of the sensor system, the lower edge of the door leaf must not be higher than the shoulder of the smallest animal.

For the correct installation of a petWALK pet door the aperture for your chosen model has to be as precise as possible.

The dimensions of the aperture are 38 ±1 cm x 53 ±1 cm (15 ±0.4" x 21 ±0.4") for the model „Medium“, for the model „Large“ the aperture must have a size of 48 ±1 cm x 73 ±1 cm (19 ±0.4" x 28.8 ±0.4").

It must be ensured that at least 3 cm (1") space is available around the aperture so that the frame of the petWALK pet door can be mounted easily.

When using a glass port, the distance to the outer edge of the element should be at least 3cm (1.2") in each direction depending on the requirements of the glass manufacturer.



3. The Right Door Stop

Now you have to decide to which direction the door should open.



petWALK pet doors always open inwards. When you place an order, the opening direction of the door leaf, where the hinges are to be stuck, can be chosen to match your personal living situation.

You can choose between a left and a right-hinged door. A right-hinged door always opens inwards to the right side and a left-hinged door accordingly always opens inwards toward the left side.

4. Installation Location

As a next step the installation point has to be fixed.

You have the freedom to choose where and how you want to mount the animal door. If possible, we recommend choosing a weather proof and quiet spot that is easily accessible for your animals and where you do not constantly pass by.

Whether thick outside walls, doors or double-glazing: petWALK pet doors adapt easily to all conditions. Thanks to the unique design of petWALK pet doors, installation is really very simple. You need an aperture in the appropriate size and a power outlet within a few metres.

INSTALLATION INTO INSULATED GLAZING



The easiest way to install a petWALK pet door is the assembly into double or triple insulated glazing. A new glass pane with the correct aperture and a firm frame around this opening has to be ordered at your window company or glazier. Then the door is simply „clamped“ and the installation is done. A circumferential seal on both frames creates an air - and watertight connection.

petWALK pet doors must be installed into, at least, double isolation glazing preferable with one-pane safety glass. petWALK pet doors are not suitable for installation into single glazing.

In cases where an outstanding degree of insulation is necessary, you can add our additional frame insulation to the outer frame of the pet door.

INSTALLATION INTO A PANEL / DOOR



It is also very simple to install a petWALK pet door into a (door) panel, since the aperture required can often quite quickly and easily be established by yourself.



In case the thickness of the component exceeds 5 cm (2"), the spacer is no longer needed.

For thicker panels the use of a short tunnel can be taken into consideration for optical reasons. In case of door mounting the use of a door contact is advisable.

WALL INSTALLATION

The subsequent installation in masonry can also be carried out as into a panel, but there is also the possibility to integrate the door system like a conventional window using a mounting frame in the building.

The mounting frame is attached to the wall and the exterior and interior plaster work will be performed to this mounting frame. The installation of the petWALK pet door will be done after completion of plastering work.

The space in the wall between the outer and the inner frame is sealed airtight with a tunnel. Furthermore, the use of an outer window sill (weather plate) is recommended below the door module to discharge rain and for insulation protection.

Optionally the thermal insulation of the building can also be pulled over the frame and thus the thermal qualities of the door system further improved. Alternatively an additional frame insulation can be mounted for easier maintenance.

Many other ideas of installing a petWALK pet door into various materials can be found in the download area of our Internet site. Professionals can also download details as drawing files and access technical data like thermal bridge calculations from there.

5. Accessories

Depending on the installation location and mounting method, you can choose from a number of enhancements that will help you with the installation and connection to other systems.



CONTROL MODULE

This little box connects every petWALK door to the Internet and opens up groundbreaking new possibilities for you!

It allows you to easily control and configure your door from any location on the planet with your mobile device, a web browser or smart home devices like Amazon's Alexa™. It also enables integration with other cloud based services and devices like surveillance cams and extension of door features with additional modules like the external petWALK RFID Access Module.



RFID ACCESS MODULE

The external RFID Antenna allows unhindered and fast detection of your pet's RFID chip. Gone is the poor recognition of the pet in complicated installations. As your pet approaches petWALK Access, the RFID chip is read and the door opening release is wirelessly sent to the petWALK door. Your pet can then enter freely through the already opened door.

You can mount this module outdoors or in your house. An IP67 housing makes the module absolutely weatherproof. The module can be powered by 4 AA batteries or our standard petWALK power supply.



RFID COLLAR TAGS

For not chipped pets, there are RFID collar tags available in two sizes for cats and dogs.



CONNECTION CABLE - ALARM RELAY

petWALK pet doors can be connected to an alarm system. For the alarm system they behave the same way as a secured window.

As long as the door is opened as intended, the petWALK pet door simulates a closed window, if the door leaf is broken violently, the door announces an open window. This will allow your pets to maintain their habits even when the alarm system is armed and your house is secured.

The alarm extension is a pre-installed cable set, which allows any electrician to connect his alarm installation to the door.



CONNECTION CABLE - DOOR CONTACT

This cable is used to connect the petWALK door to an external door opening contact. It will ensure that the petWALK pet door remains closed if the front door is opened. petWALK pet doors support all standard door contacts (NC, NO). With the preparation set, the petWALK door comes with a cable set for connection to any external contact. A matching door contact can be ordered as accessory.

Order with the door or retrofit later

If you order the cables with the door module, these are already fitted at the factory for you. Of course you can also self-assemble them at a later point in time.



MAGNETIC DOOR CONTACT

The door contact detects an opening of the main door and lets the petWALK door close immediately and stay that way. In order to connect to the petWALK door the connection cable - door contact is required.



FLUSH MOUNTED POWER SUPPLY

For an invisible connection to the power supply especially for in-wall installation, we recommend using the optional flush-mounted power supply. The power supply can be installed in a flush-mounted junction box, in a blind socket or on top of the tunnel.



RAIN SENSOR SET

The remote Rain Sensor Set ensures that your animals stay in the house when it is raining in order to avoid debris. The set consists of a 433 MHz receiver unit in the device, the rain sensor wireless module and the professional, battery-powered rain catcher.



PAWMAT

Ideal to get rid of all the debris on the paws of your little friend. Fits perfect for the petWALK Tunnel and can be cut to size. It can be placed inside the tunnel or in front of the petWALK door.

5. Accessories



TUNNEL SET

If you want to install the petWALK door system in a thick structure, like a wall, you can plank the distance between the outer and inner frame airtight with the help of a tunnel set.

The tunnel set consists of four tunnel plates made of durable laminate, 8 piece threaded bolts extensions, cellular rubber strips for sealing the tunnel elements and an extension for the cable connection between inner and outer frame.

The tunnel sets can be ordered in steps of 10 cm (4") from 10 cm (4") to 60 cm (24"). The plates and the threaded bolts of the mounting set will be cut during the installation to the exact length. The tunnel plates have a grey and a white side.

ADDITIONAL FRAME INSULATION

In case there are especially high demands on the thermal insulation properties of the pet door, you can reduce the already excellent U-value to less than 0.5 W/m²K using the optional frame insulation.

The additional frame insulation can be easily attached to the outer frame and fixed laterally by means of four screws. The decor can be mounted directly on the insulating shell.

CUSTOM CHASSIS COLOUR

By default, petWALK door modules come in subtle matte black. Optionally, the housing can be ordered in any other standard RAL colour.



DESIGN

petWALK pet doors can be adjusted with the help of decorative decors in different materials and colours of the installation situation and personal design preferences. If desired, you can even determine the colour of the entire door module.



ACRYL GLASS DECORS

The decorative 3 mm (0.12") thick acrylic decors are provided with an UV-resistant and protective coating on the backside. State of the art laser cutting process guarantees an optimal fit. The included high performance Velcro closures allow easy installation and trouble-free replacement.

If you have a special design request or want to adjust the petWALK pet door to your existing colour scheme, you can order any available standard RAL colour or supplied own photo design on a high quality acryl sheet.



HPL DECORS


Alternatively, you can choose for particularly exposed installation situations between a variety of thermosetting high-pressure laminates (HPL) from brand manufacturers that have an extremely effective weather protection and durability.

If desired, you can also order specially tailor made HPL decors in any RAL colour or decoration.

Specifications

Dimensions	Medium	Large
Inner width	20 cm x 30 cm (8" x 11")	30 cm x 50 cm (11" x 20")
Mounting dimensions	38 ± 1 cm x 53 ± 1 cm (15 ± 0,4" x 21 ± 0,4")	48 ± 1 cm x 73 ± 1 cm (19 ± 0,4" x 28,8 ± 0,4")
Overall dimensions	42 cm x 57 cm x 9,5 cm (16,5" x 22,4" x 9")	52 cm x 77 cm x 9,5 cm (20,5" x 30,3" x 9")
Component thicknesses		
Standard	2 cm - 10 cm (0,8" - 4")	
With additional tunnel	10 cm - 100 cm (4" - 40")	
Thermal insulation		
Standard	0,8 W/m ² K (Model Large)	
With additional insulation	0,5 W/m ² K (Model Large)	
Air tightness		
Class 4 according to EN 12207 - 1999-11 / n ₆₀₀ = 0,0 m ³ /h		
Driving rain resistance		
Class E1050 according to EN 12208 - 1999-11		
Burglary resistance		
RC2 compliant lockers according DIN EN 1627		
RFID (Animal -ID)		
Implanted or external transponders per ISO standards 11784 / 11785 FDX-B		
Range: 5 cm - 25 cm (implanted) / 20 cm - 50 cm (external)		
Climatic conditions		
Inside	0° C bis +40° C	
Outside	-40° C bis + 85° C	
Power supply		
Input voltage	90 - 264 V AC	
Output voltage	24V DC	
Base load	0,2 A	
Cable length	1,8 m	
Battery pack	12 V 0,8 A	
Clock backup battery	CR3220	
Interfaces		
Serial RPC extension interface		
433,92 MHz radio receiver for external environmental sensors		
Input for secondary door contact		
Output for external alarm systems		

Questions?
We answer!

 **+43 2635 66937**

 **sales@petwalk.at**

 **www.petwalk.at**



petWALK® is a registered trademark of Petwalk Solutions GmbH & Co. KG

Petwalk Solutions GmbH & Co. KG, Josef Huber Straße 6/1, 2620 Ternitz, Austria | Phone: +43 2635 66937 / office@petwalk.at / www.petwalk.at
Trade register: FN 346013v, Landesgericht Wiener Neustadt, VAT No.: ATU65683502 / DE 299168412 | Managing Directors: Klaus Kindl, Stefan Winkler

Design 2018 by chiwa media | www.chiwamedia.com | All information is subject to change

